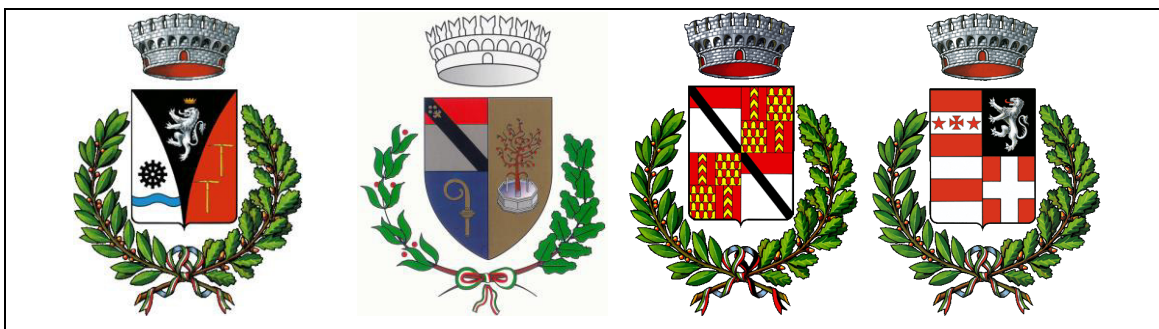


**REGIONE AUTONOMA VALLE D'AOSTA**  
**REGION AUTONOME VALLEE D'AOSTE**



**COMUNI DI**  
**CHAMPDEPRAZ – ISSOGNE – VERRRES – ARNAD**

**Committente: Amministrazione comunale di CHAMPDEPRAZ**

**POTENZIAMENTO DELLA RETE IDRICA DI CHAMPDEPRAZ AI  
FINI DEL COLLEGAMENTO CON L'ACQUEDOTTO COMUNALE  
DI ARNAD ED ISSOGNE**

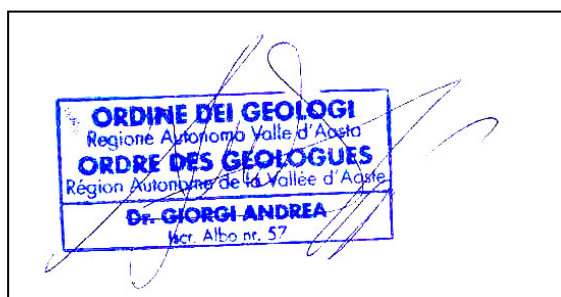
**STUDIO DI IMPATTO AMBIENTALE**

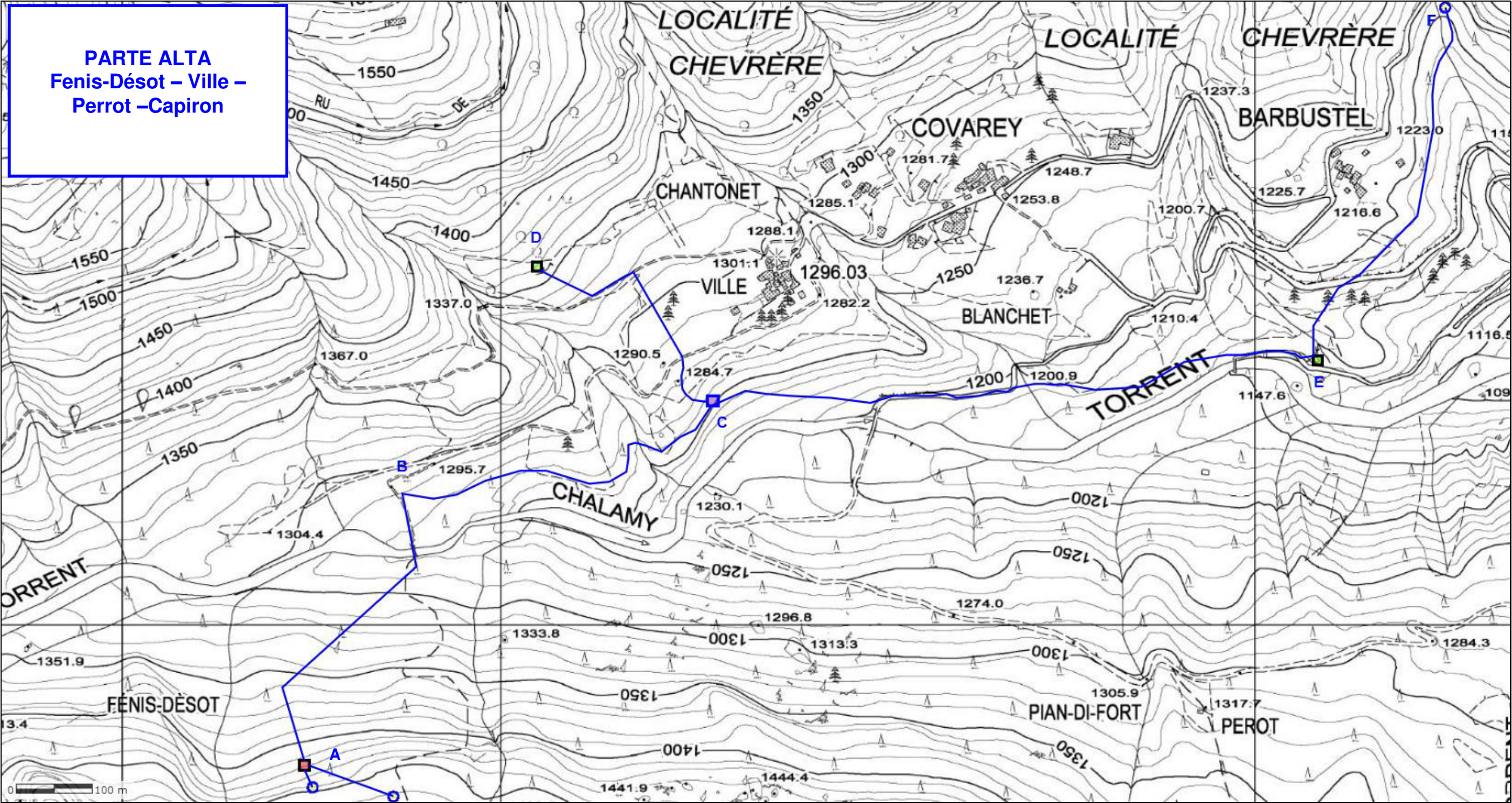
**TAV. 8.4 - CARTA DEI VINCOLI ART. 35/2 LR 11/1998**

**TECNICI INCARICATI:**

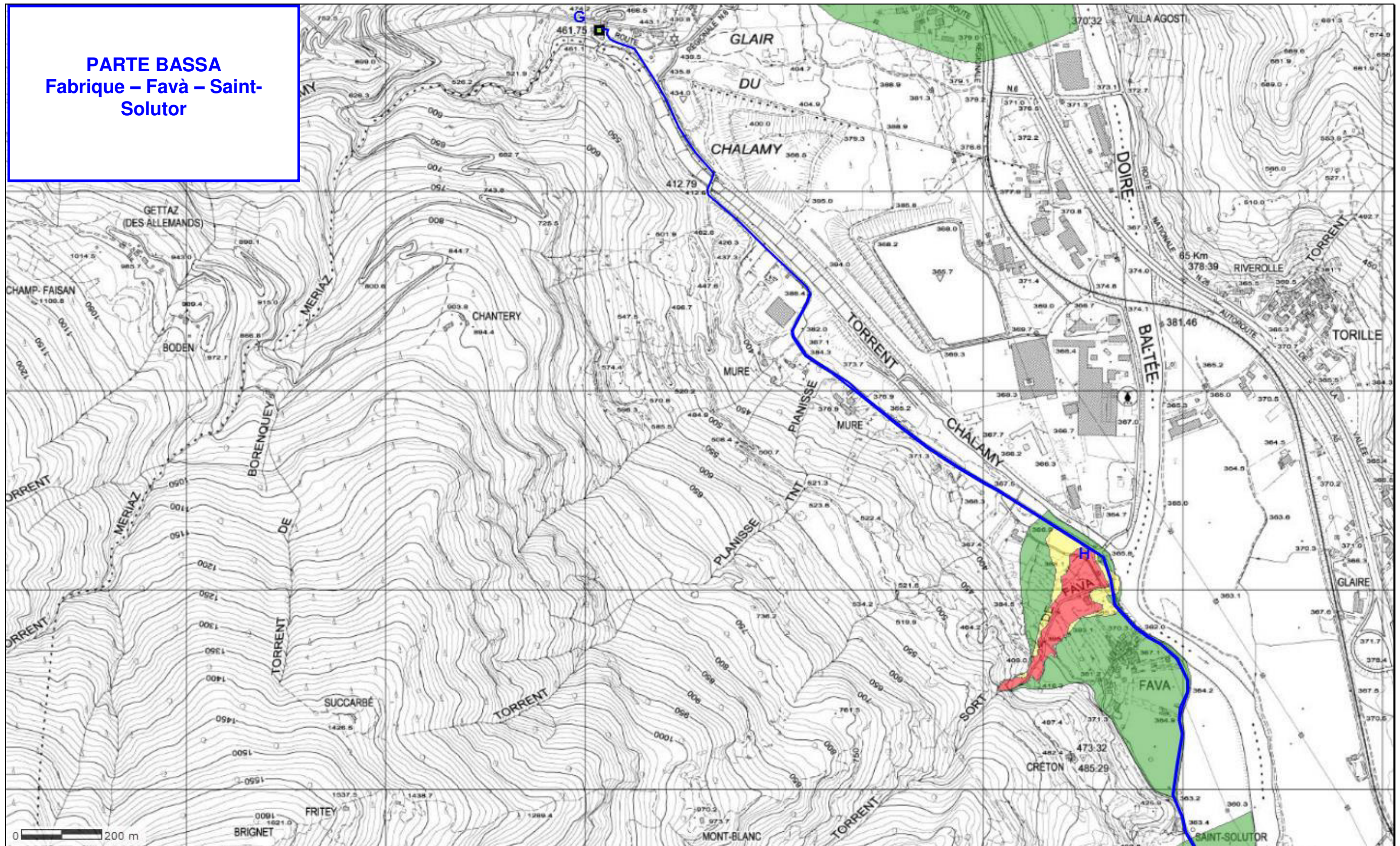
**GEOL. ANDREA GIORGI**

**FOR. LUCA PEZZUOLO**

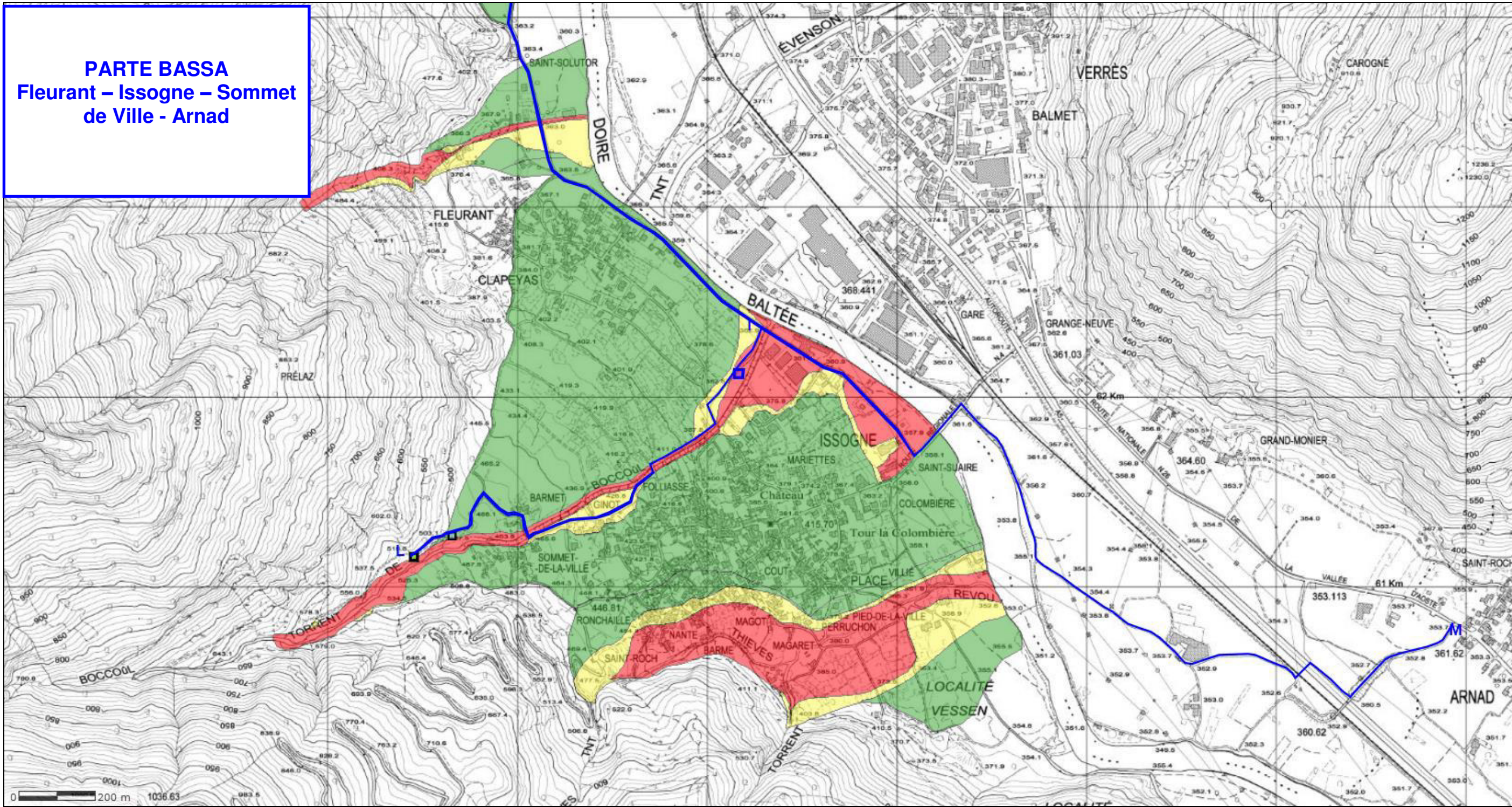




**PARTE BASSA**  
**Fabrique – Favà – Saint-**  
**Solutor**




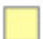
**PARTE BASSA**  
Fleurant – Issogne – Sommet  
de Ville - Arnad









## **LEGENDA**

### **Ambiti Inedificabili**

#### **Art.35 comma 2 – Studi di bacino approvati**

-  DF1 - Area ad alta pericolosità
-  DF2 - Area a media pericolosità
-  DF3 - Area a bassa pericolosità

-  Tubazioni in progetto
-  Opera di presa sorgenti
-  Vasca di carico
-  Vasca di accumulo di testata
-  Vasca di accumulo esistente
-  Camera di manovra